

Smart Home Systems

User Manual



MyPlace User Manual

Contents

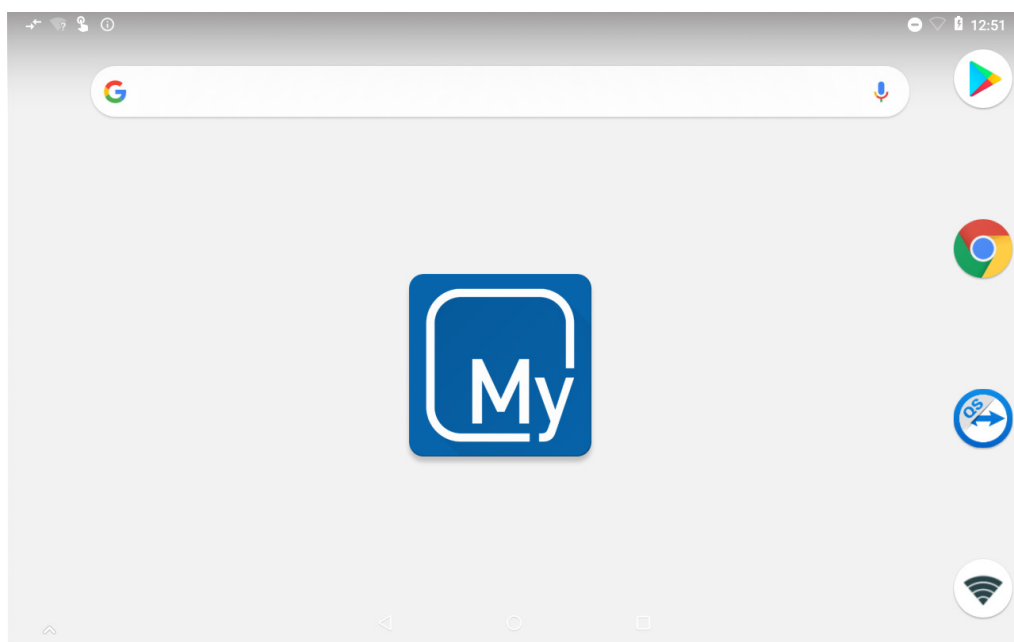
1 - INTRODUCTION	3
2 - CONTROLS	4
3 - HOME PAGE	5
4 - GROUP PAGE	6
5 - SCENES PAGE	7
6 - SCENES EDITOR PAGE	8
7 - EVENTS PAGE	9
8 - EVENTS EDITOR PAGE	10
9 - SAMPLE EVENTS SETTING	14
10 - SETUP PAGE	15
11 - OPTIONS PAGE	16

1 - INTRODUCTION

Welcome to your new MyPlace smart home system.

The information provided in this user manual will help you to get the most from your new home system.

Upon first power up, the system will take a few minutes to initialise. If you walk away from your screen it will go to sleep, to wake the screen simply double tap on a corner of the screen.



This is your home screen, press the large My button to start the MyPlace app. Once the MyPlace app has loaded press the purple MyPlace tab to start controlling your garage door, fans and roller blinds in your home.

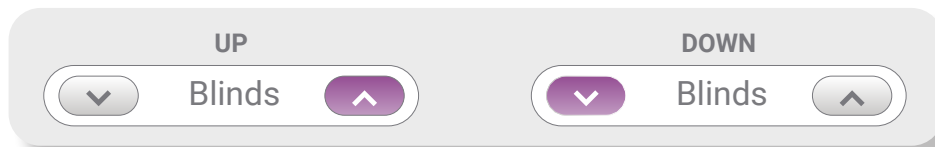
MyPlace will send a garage door notification to your wall mounted touch screen & smart device when you forget to close your garage door. You will need an internet connection to receive the notification.

HINT: Voice Control (Smart Khaya) and Garage door notification need remote access enabled to work.

2 - CONTROLS

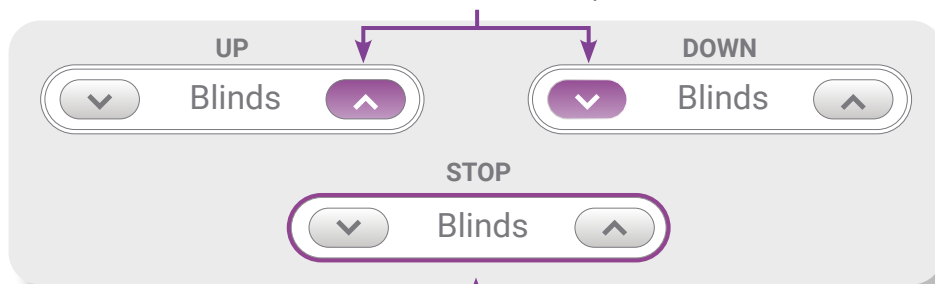
The following shows the types of buttons that may be found in your MyPlace system.

Up/Down Button (Garage & Blinds)



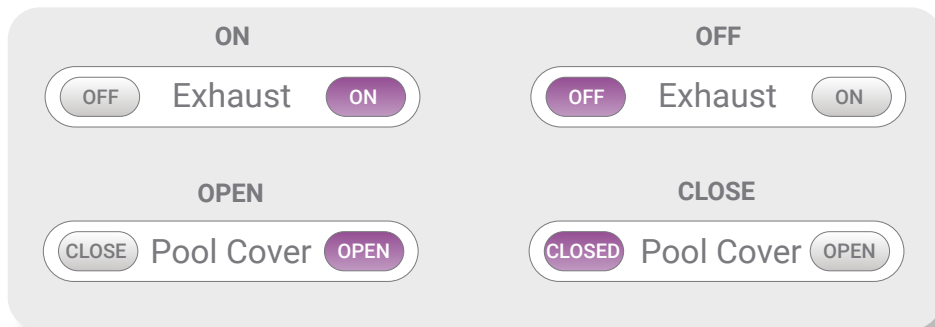
Up/Down/Stop Button* (Stop Blinds)

Press to move the blinds up or down.



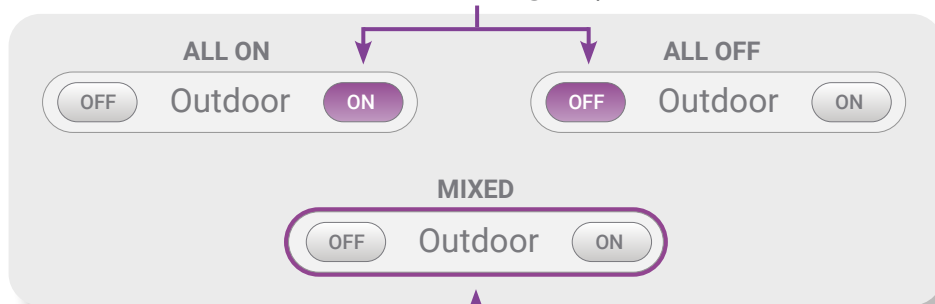
Press to stop the blinds from moving.

Other Buttons



Group button

Highlighted button indicates status of the group

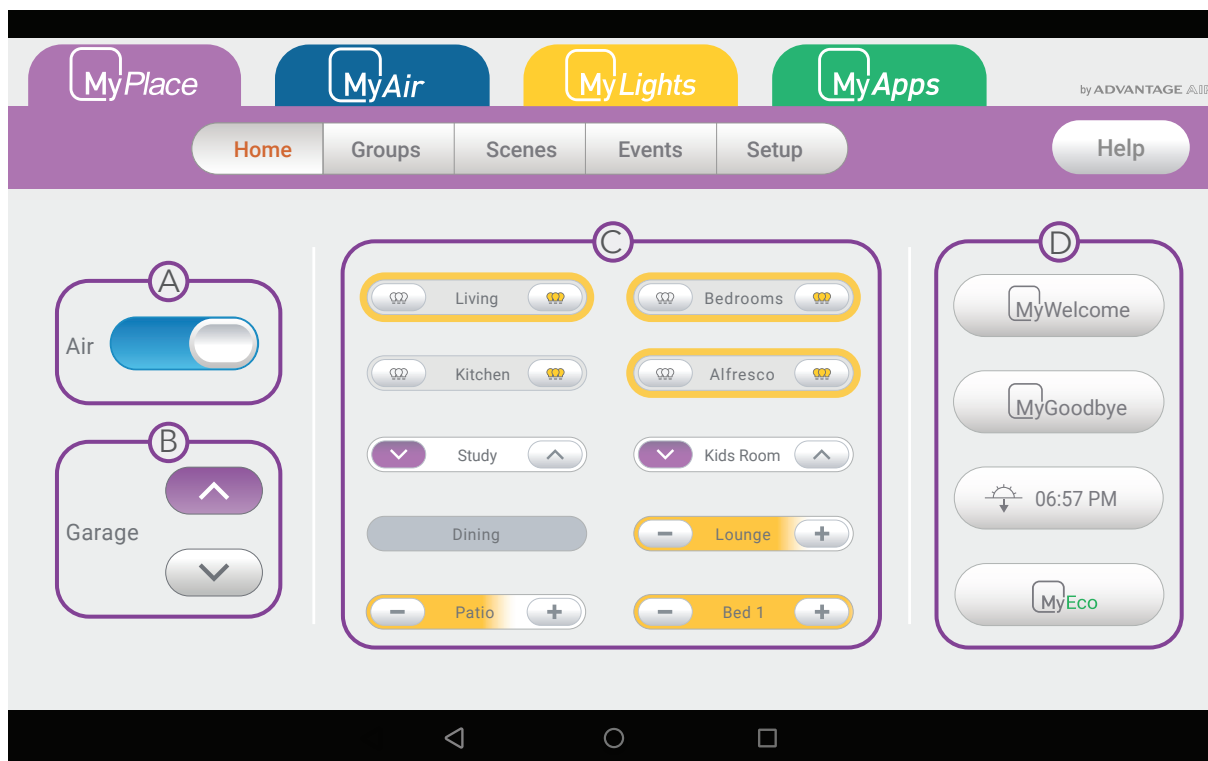


Purple band shows that one or more items are ON in the Group.

* Please check with your installer if your configuration supports the stop function.

3 - HOME PAGE

This page summarises the main functions connected on your MyPlace system.



(A)- Aircon

If you have a MyAir system, you can switch your aircon On and Off from this button. The colour of the button shows the mode that your aircon is currently running.

(B)- Garage Door

If you have connected your Garage door to the MyPlace system, press this button to open or close your garage door. If you have two or more garage doors, then the first garage door from the groups page will be controlled here.

(C)- Favourite Groups & Buttons

The middle section of the Home screen displays the most used buttons (device specific). Any groups that have been starred in the Group screen will also be shown in this section. Starred groups will be shown first, followed by the most used buttons.

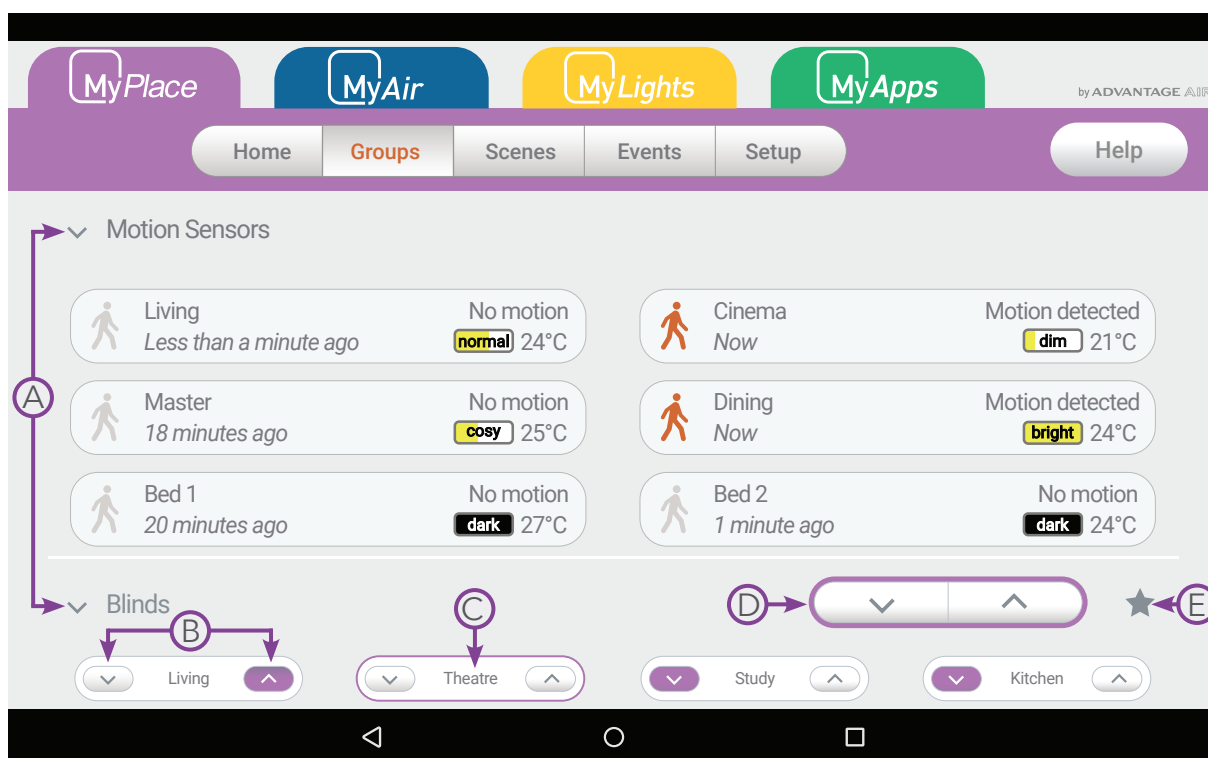
(D)- Favourite Scenes

These are your four favourite scenes that have been starred from the Scenes screen. The four scenes can be changed at any time by selecting and deselecting the stars on the Scenes page. Pressing a favourite scene button will run that scene.

4 - GROUP PAGE

The Groups page enables you to group items into useful groups, such as creating a group for all blinds in your dining room. This allows you to control all of the grouped blinds from a single button.

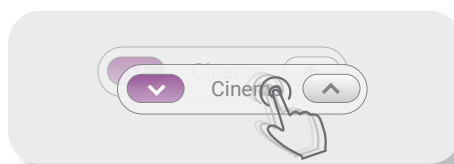
All motion sensors connected to your licensed Hue bridge will show in this page. It displays the name of the sensor, how long since the motion was detected, the light intensity and the ambient temperature.



- A** - Press to expand or collapse group.
- B** - Press the item button to individually change its status.
- C** - Press the centre of the button to stop blinds from moving.
- D** - Press the group buttons to change the status of all items in the group.
- E** - Press the star button to pin a group to the favourites section of MyPlace Home.

Groups can be created, renamed or deleted through the Manage Groups button found on the Setup screen. Up to 10 groups can be created.

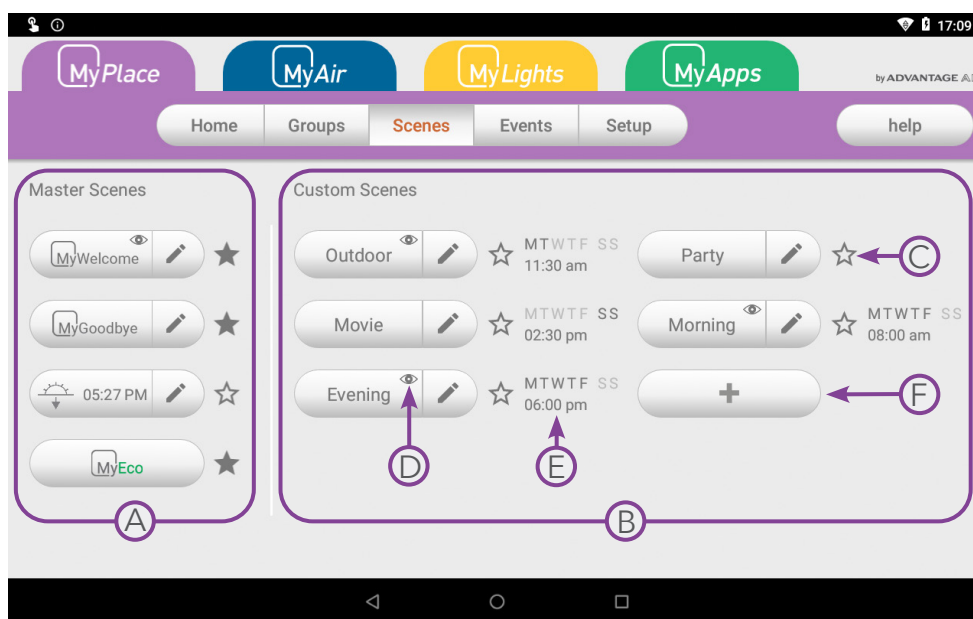
Pressing and holding on a switch icon in the Group screen will allow you to drag the switch into a new position or group.



5 - SCENES PAGE

Scenes allow you to set the aircon, lights and other items, the way you want them from a single button. Scenes can be triggered by manually pressing the Scene button or enabling the scene to run in certain day and time.

NOTE: Scenes can be found under MyPlace tab if you have multiple tabs.



A - Master Scenes

There are 4 master scenes that perform preconfigured functions as follows;

- MyWelcome - Turns ON all lights in the system
- MyGoodbye - Turns OFF all the lights
- MyEco - Saves energy by dimming all the dimmable lights to 80%
- MySunset - Turns on all the lights at sunset.

NOTE: All Master scenes except MyEco can be edited from your wall mounted touch screen by pressing the Edit (pencil) button.

B - Custom Scenes

You can add up to 12 custom scenes.

C - Press the star button to pin a group to the favourites scenes section of MyPlace Home

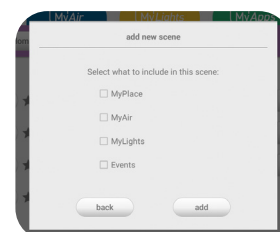
D - This shows that the events is included in the scene

E - This shows the day and time when the scene will run automatically.

F - Creating a Custom Scene

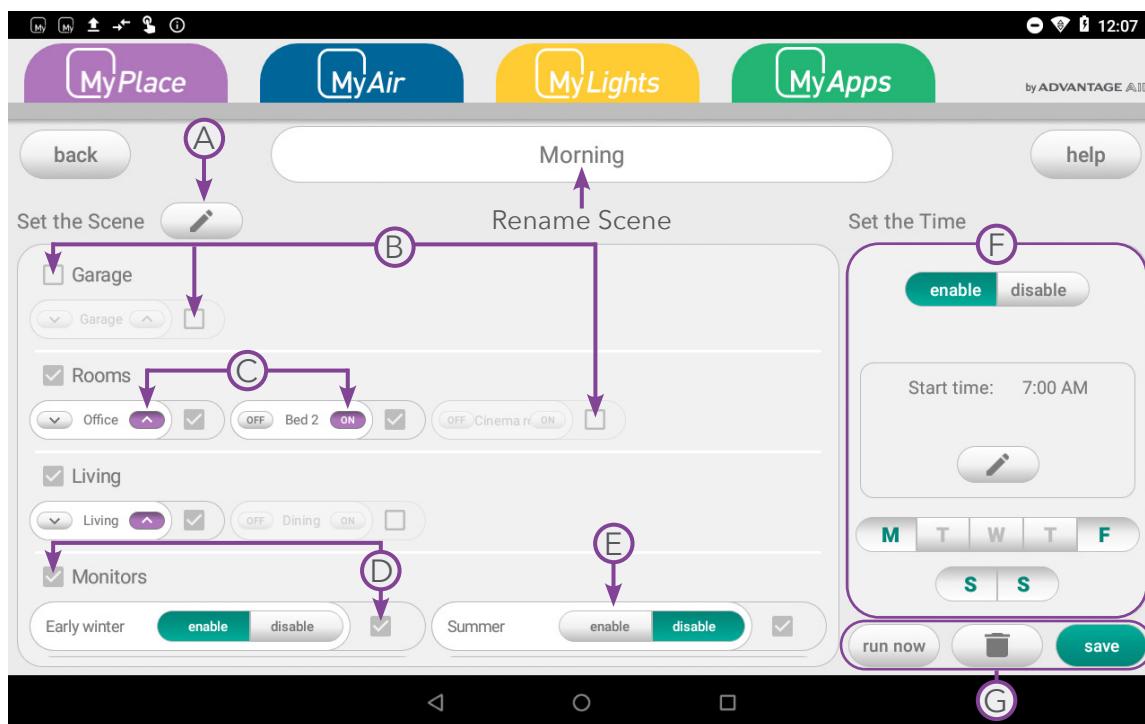
To create a new Custom Scene press the + button. This will bring up the Scene Editor screen.

If you also have multiple tabs, you can select which of them you want to add and configure in the scene.



6 - SCENES EDITOR PAGE

The Scene Editor screen as shown below is where you can configure any new or existing scenes.



Set the Scene Window

This window allows you to control what the scene will do to your aircon, lights and other items when it runs.

- A** - If you have MyAir or MyLights, you can add or remove them to this scene.
- B** - Unticked checkbox will be ignored when the scene runs.
- C** - Highlighted Buttons indicate what will happen when the scene runs.
- D** - Ticked checkbox are included in the scene.
- E** - Press to change the state of the item.

F - Set the Time Window

This window allows you to set a time and choose which days for your scene to run. The schedule can be enabled and disabled.

Note: MyTime is only applicable if you also have MyLights installed.
The AC stop time is only applicable if you also have MyAir installed.

G - Saving, Running and Deleting a Scene

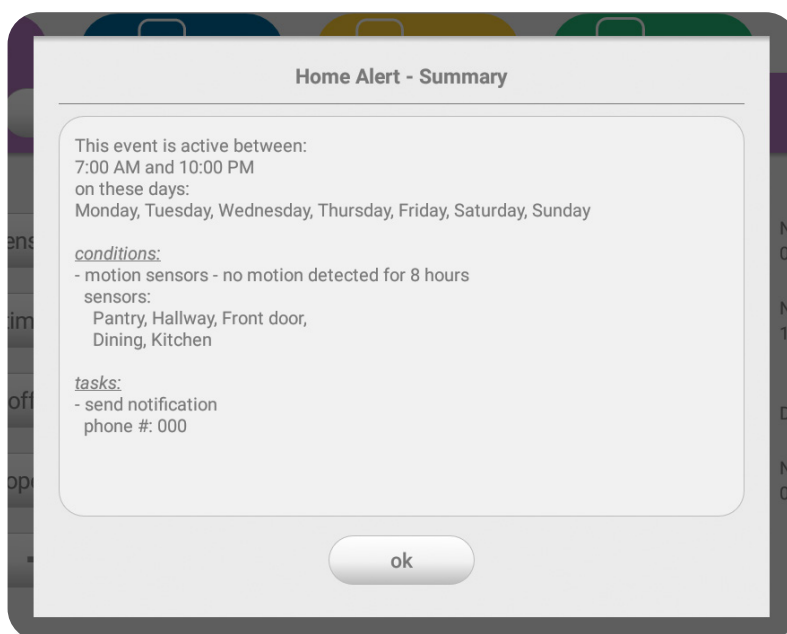
All changes to a Scene must be saved by pressing the save button. You can run a scene from the editor screen by pressing the "Run Now" button. If the scene is no longer needed then it can be deleted by pressing the trash button.

7 - EVENTS PAGE

Events give you the ability to set and run 'tasks' when specific events happen around your home during a designated period of time.



- A** - This shows what task is enabled on this event.
- B** - Press to edit an event.
- C** - This shows when an event is disabled.
- D** - Press the button to create an event.
- E** - This shows the time when an event is active.
- F** - Press the event name to display the summary of the event.



8 - EVENT EDITOR PAGE

Events will monitor the selected condition(s) during the selected time period and day(s). When the conditions are met, the selected task will run.

NOTE: Make sure your wall mounted touchscreen is connected to your Wi-Fi. To start creating an event, set your post code first in options page.



A- Conditions

These are the conditions that need to be met first before a task will trigger.

- **Multiple Occurrence** - this can triggers the task multiple times.
- **Single Occurrence** - this can triggers the task once per day. You can select multiple "single occurrence" conditions and all of them must be met for task to trigger.

B- Tasks

These are the actions that will take place when a condition(s) was satisfied. Please follow this [link](#) for more information.

C- Active Times

These is where you set the schedule when the event will be active.

D- Trash Button

Press to delete the event.

E- Save Button

Press to save and exit the event.

8 - EVENT EDITOR PAGE

Conditions > Multiple Occurrence

Motion Sensors

This condition will be satisfied when there is motion or no motion detected. This is only applicable if you have motion sensor added in your Licensed Hue Bridge.

Conditions

Motion sensors

Trigger:

On motion

On no motion for 2 mins

Sensors:

Hallway Bedroom

Pantry Garage

Cinema

Light Sensitivity:

when light level on the sensor is

dim or below

Motion was detected

No motion was detected

Selected sensor

Light level condition where the event can trigger

The idle time of motion sensor. It can be set from 2 mins to 24 hours

The light sensitivity can be set to any level or a range of light level

Garage Door

This condition will be satisfied when any garage door is opened or closed. This only applicable if you have MyGarage module of MyPlace.

Conditions

Motion sensors

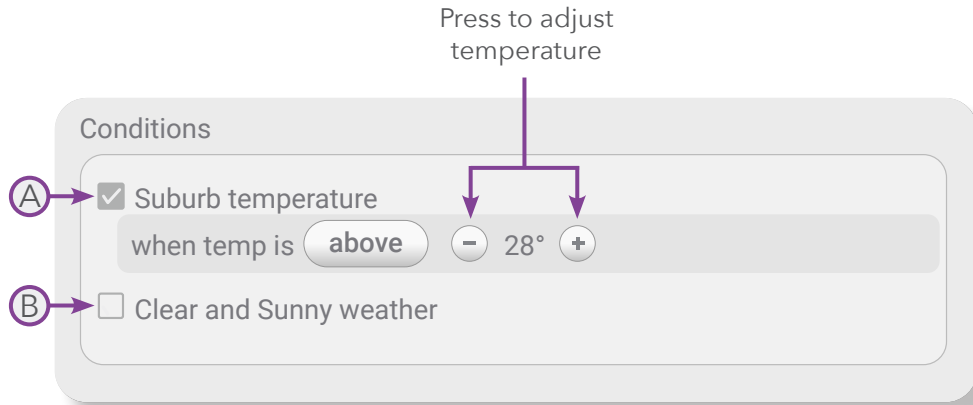
Garage door

When any garage door is opened

The status of garage door can be set to opened or closed

8 - EVENT EDITOR PAGE

Conditions > Single Occurrence

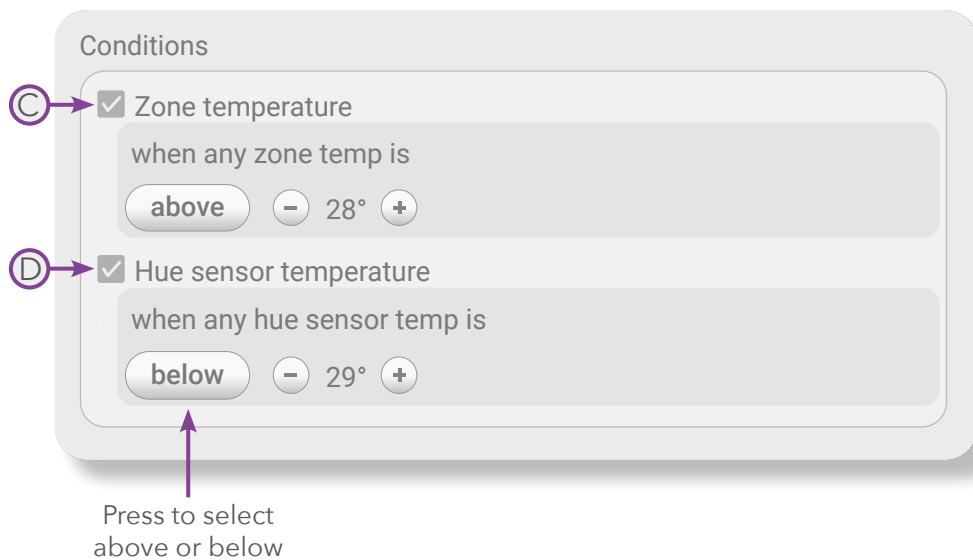


A- Suburb temperature

This condition will be satisfied when the current temperature of your location is above or below the set temperature.

B- Clear and Sunny weather

This condition will be satisfied when the forecast in your location is "Sunny" or "Clear".



C- Zone temperature

This condition will be satisfied when the zone temperature is above or below the set temperature.

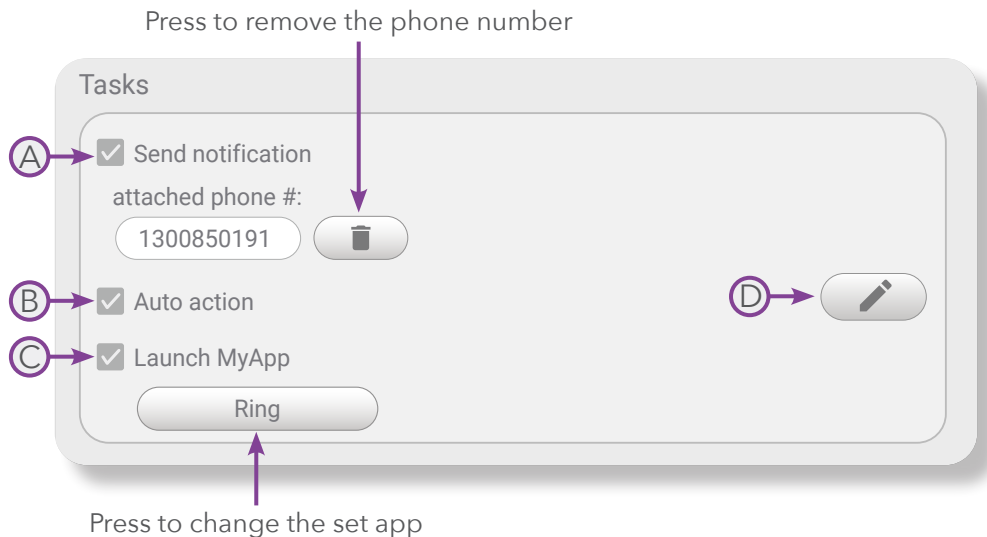
D- Hue sensor temperature

This condition will be satisfied when the hue sensor temperature is above or below the set temperature. This requires a Licensed Hue Bridge.

8 - EVENTS EDITOR PAGE

Tasks

These are the tasks that will run after the condition(s) is satisfied.



A- Send Notification

This task will send a notification to all paired phones. When you set a phone number in this task, a call button will appear after opening the notification. This will give you an option to have a quick call to the phone number set.

NOTE: The notification will not go to the number set. The number set will show in the notification on your paired phones.

B- Auto action

This task will initiate your things to run according to the set configurations.

C- Launch MyApp

This task will open an app. If you open a notification in your phone, the app will load if it exist.

D- Edit Auto action

Press to edit the auto action.

NOTE: Don't forget to press the  button to save the configuration made in the auto action.

9 - SAMPLE EVENTS SETTING

When you closed the garage door to go to work

- received notification that the garage is closed
- move down the blinds in your rooms

Event Name: out for work

Condition	Task	Active Times
Garage door is closed	<p>Send notification Auto action</p> <p><u>Auto action configuration</u></p> <p>MyPlace: <i>will move down:</i> Master bed 1, Master bed 2</p>	<p>This event is active between: 7:30 AM and 8:00 PM</p> <p>On these days: Monday, Tuesday, Wednesday, Thursday, Friday</p>

When you want to save energy

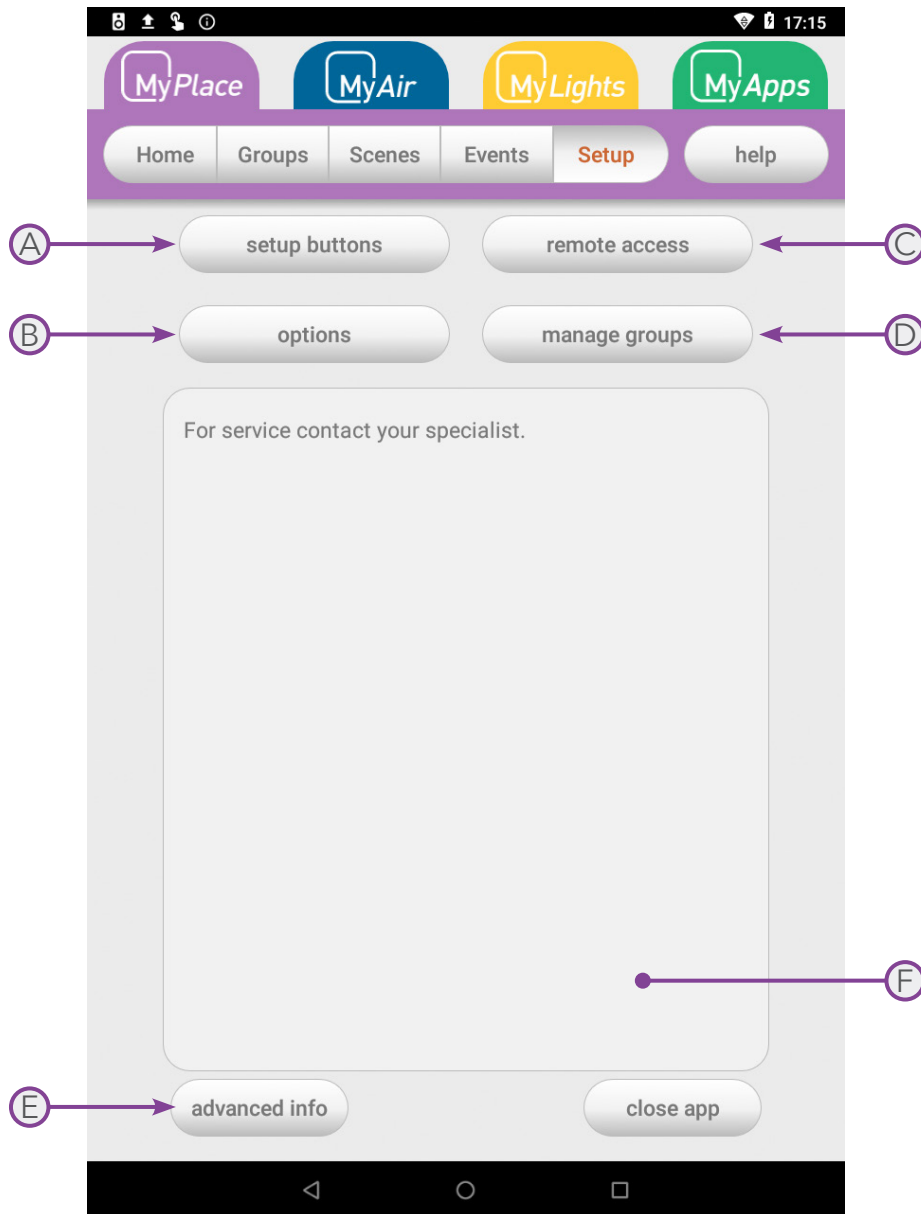
- Turn OFF aircon and all lights when there is no motion at home for 1 hour
- move down all blinds in your home

Event Name: Empty home

Condition	Task	Active Times
<p>Motion sensor - no motion detected for 1 hour</p> <p>Sensors: Bedroom, Hallway, Living, Home office, Cinema room</p>	<p>Auto action</p> <p><u>Auto action configuration</u></p> <p>MyAir: Aircon: off</p> <p>MyLights: <i>will turn off:</i> Hue lamp, Cinema room, Master, Hallway, Kitchen, Dining, Bed 1, Bed 2, Bed 3, Guest room</p> <p>MyPlace: <i>will move down:</i> Cinema room, Master, Hallway, Dining, Bed 1, Bed 2, Bed 3, Guest room</p>	<p>This event is active between: 9:00 AM and 10:00 PM</p> <p>On these days: Monday, Tuesday, Wednesday, Thursday, Friday, Saturday, Sunday</p>

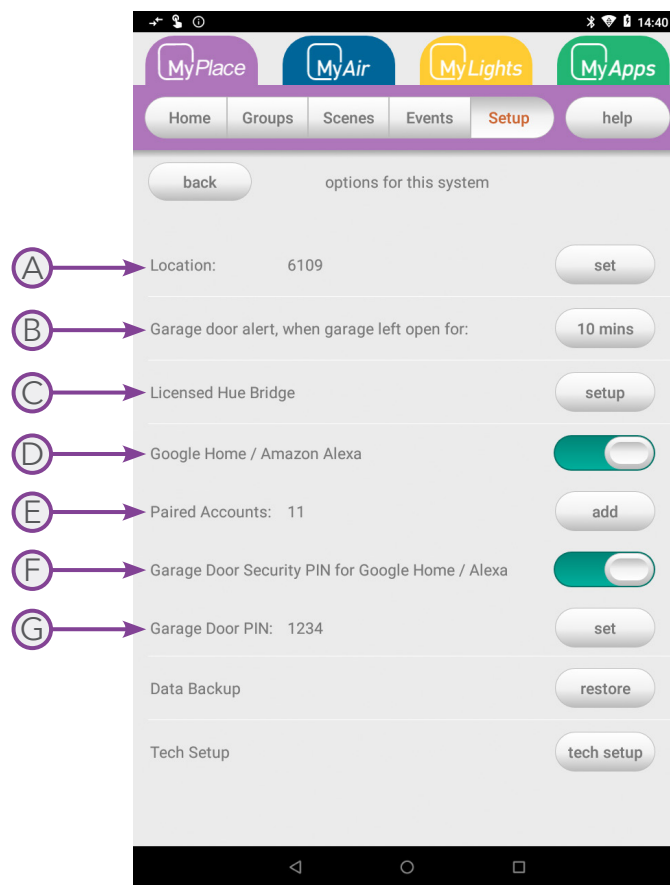
10 - SETUP PAGE

The Setup Screen allows you to configure your MyPlace system. From this screen you can perform the following actions:



- (A) - Rename motion sensors, garage, blinds and other items
- (B) - Configure MyPlace settings
- (C) - Enable / Disable Remote Access
- (D) - Manage Groups (create, rename & delete)
- (E) - Advanced Information about your system
- (F) - Status messages and codes will appear here

11 - OPTIONS PAGE



A- Location

Set your suburb post code for MySunset and Events to work properly.

B- Garage door alert

Set how long the garage is left open before it send an alert. It will continue to send notification every 30 minutes until the garage door is closed.

C- Licensed Hue Bridge

Connect your Licensed Hue Bridge to MyPlace.

D- Google Home or Amazon Alexa

Enable or disable Smart Khaya

E- Paired Accounts

Link your account to Smart Khaya to Google Home or Amazon Alexa

D- Garage Door Security Pin

Enable or disable pin code when opening or closing the garage using Smart Khaya

E- Garage Door PIN

Set your Garage Door Security Pin here.

ADVANTAGE AIR®

The advantage of Australian-made

MyPlace is designed by Advantage Air, an Australian company based in Perth, Western Australia. Since 1990, we've been dedicated to making peoples' lives more comfortable.

We started with designing and manufacturing innovative ducted air-conditioning systems. The connected smart home, like smart lighting, is the natural evolution of helping you create an environment where everything is exactly the way you like it.

We take pride in creating and exporting a local product that is world class. To achieve this, we embrace technology and invest heavily in research and development. Our ingenious engineers have developed numerous industry firsts and earned us a slew of patents, registered designs and design awards in the process.

We are committed to quality and where possible, make our components in Australia. Like MyAir, your MyPlace system is built to last.

5-Year Warranty

Advantage Air components are well known in the industry for their quality and durability. To prove our confidence, we provide a 5-year warranty on all electronic controls.

Corporate responsibility

Advantage Air is all about bringing comfort to people. We are proud to be a sponsor of Channel 9's Matt & Kim to the rescue. The show delivers life-changing renovations to families in desperate need.

ADVANTAGE AIR®

Australia

Perth

Advantage Air AUST Pty Ltd
115 Vulcan Road, Canning Vale
Western Australia 6155

T: 1300 850 191

E: techsupport@advantageair.com.au

Brisbane

Advantage Air (QLD) Pty Ltd
359 Fison Avenue East, Eagle
Farm, Queensland 4009

Sydney

Advantage Air (NSW) Pty Ltd
7/10 Anella Avenue, Castle Hill,
New South Wales 2154

For further assistance, call our MyTeam Support on 1300 850 191, Mon-Fri from 6am to 5pm WST.

Advantage Air Aust Pty Ltd reserves the right to change specifications, modify designs and discontinue items. Whilst we try to keep every detail in this document current and accurate, if there are differences or changes then Advantage Air shall not be liable for these.